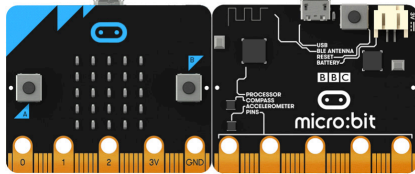


Playing with Buttons

Connect the BBC micro:bit to MicroBlocks.



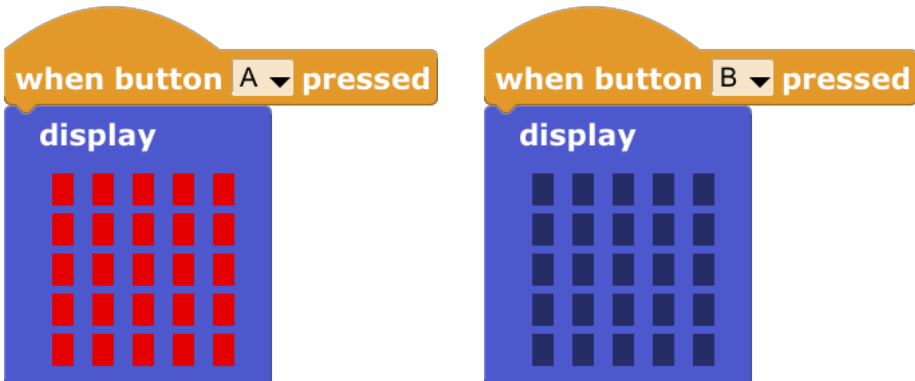
```
Serial port:
cu.usbmodem1412
other...
```

Connect ●

Go to the control blocks and drag these two blocks to the workspace.



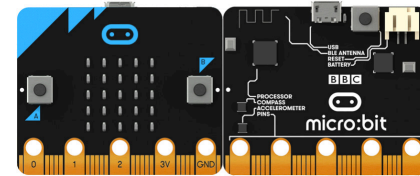
Try out these scripts to make the buttons on the BBC micro:bit turn the LEDs on and off!



Hint: make sure you click start!

Animate It

Connect the BBC micro:bit to MicroBlocks.



Create animations of letters, numbers, shapes, and symbols using the display block, wait, and repeat blocks! Can you make your initials?

